



PIATTIBELLI

The World's Thinnest





Piattibelli and Neolith® present an all-new collection of shower trays designed to adapt to any style or place.

An all-new and revolutionary product category that came about in the last decade as an effective way to combine our shower trays with any style for an infinite number of solutions in architecture, interior design...

The raw materials are not altered at all during the production process which allows for a completely anti-slip finish with a pleasant texture as well as antibacterial and antimicrobial protection.

None of their properties are lost over time; the color remains unalterable and the product is resistant to stains, cleaning product acids and impacts.

Piattibelli shower trays are easily installed due to the lightness of the single, compact and jointless Neolith® pieces.

The possibility of installing flush with the floor makes this product ideal for handicapped or senior bathrooms.

The available colors range from the purest white to the darkest black along with all the rest of the Neolith® color range.





Betón Shower Try

Sintering Technology: *compacting, resistance and durability*

The Piattibelli shower tray is produced using the Ultra Slim manufacturing technology, a patented system that is unique to the market where the raw materials are molded to get a product that is only +/- 23 mm thick.

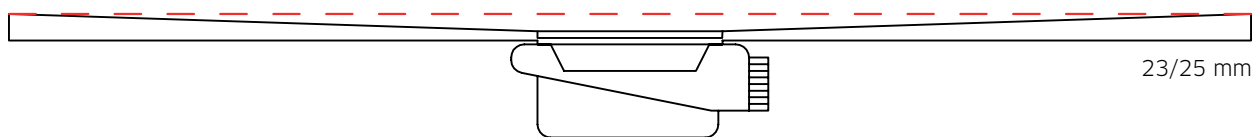
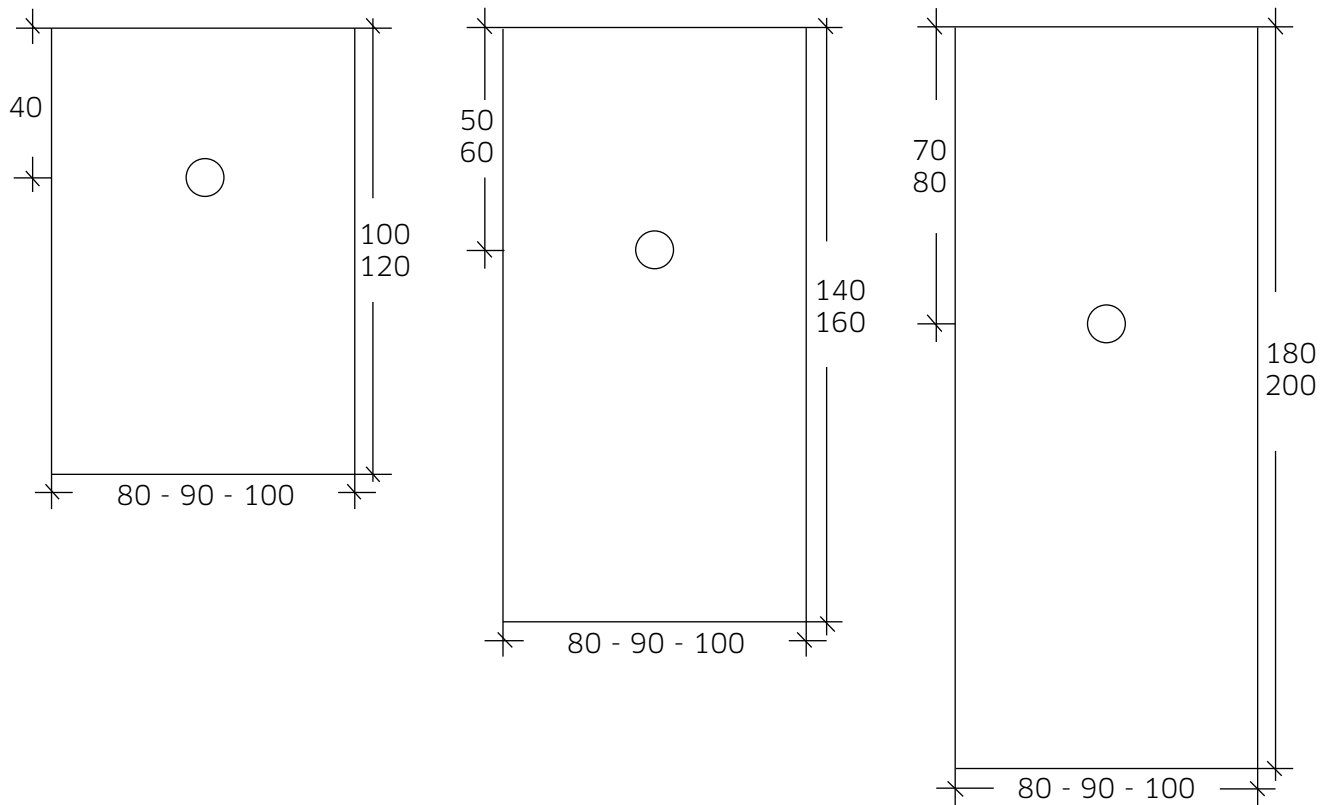
It's ideal for reforms as the thickness does not create barriers or differences in level at the shower entrance. Plus, no filtration is possible since it is produced as a single, jointless piece.

With this cutting-edge technology, Neolith® can be curved to create progressive evacuation slopes designed to facilitate fast water evacuation (pursuant to ITC / UNE-EN 14527:2006 STANDARD + A1:2010 SECT. 5.2 certification).

The combination of this technology and the drainage valve by Viega, which is the market leader with its Tempoplex 80 models, guarantees an evacuation rate of 0.64 l/sec., making it the most effective on the market.

Formats

Piattibelli shower trays come in different formats measuring 200 x 100 cm to 70 x 70 cm, which means greater uniformity and continuity in different spaces for easier handling and to minimize the number of joints for more aesthetic and hygiene benefits.



Tempoplex 80 functional unit (0.64 l/sec.)

Finishes

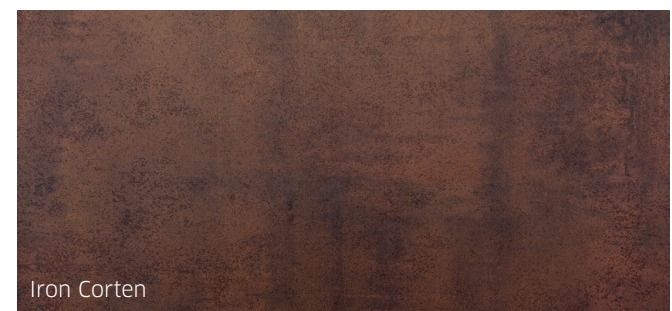
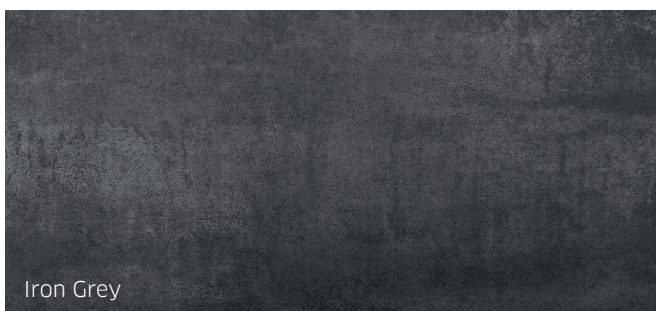
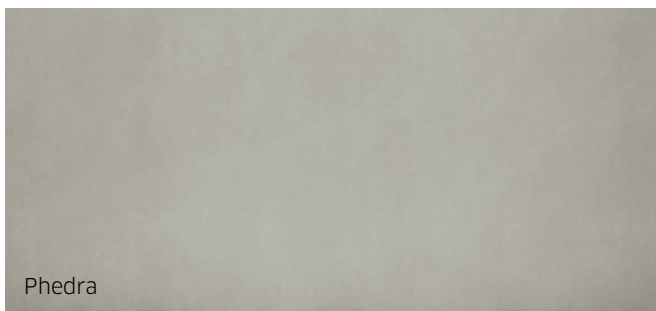
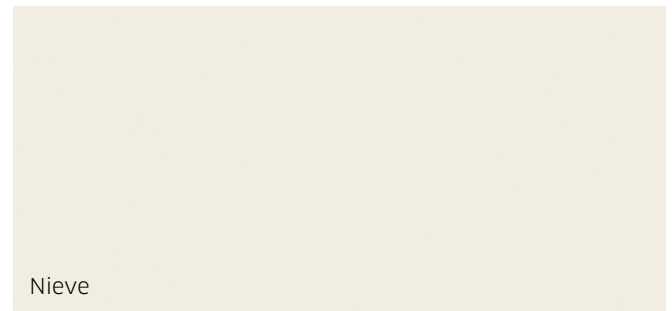
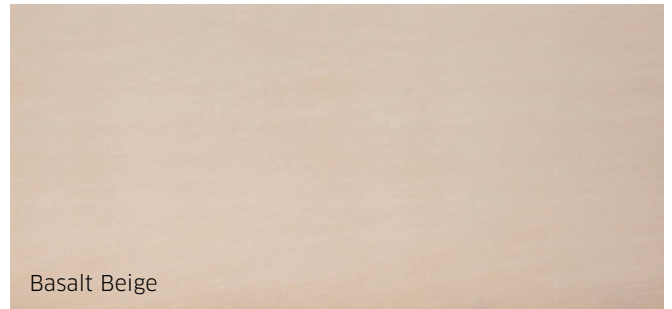
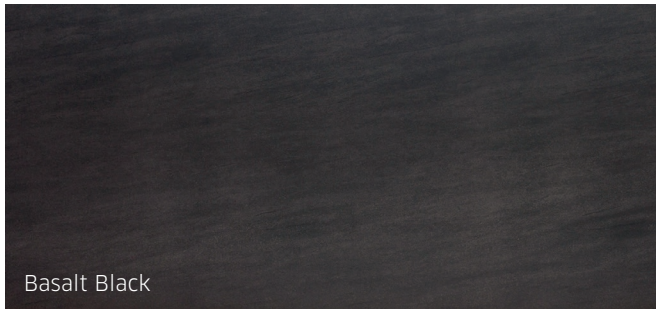


Stainless steel drain cover

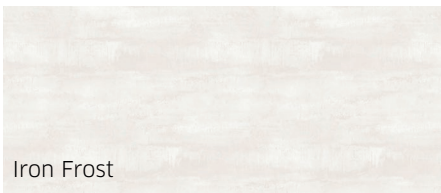
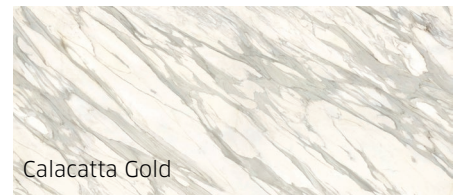
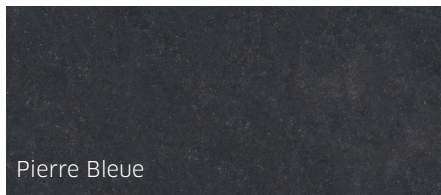
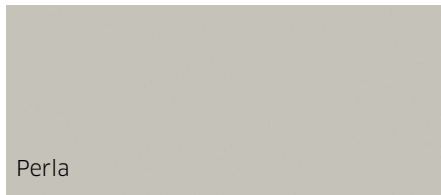
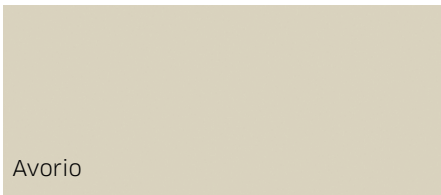
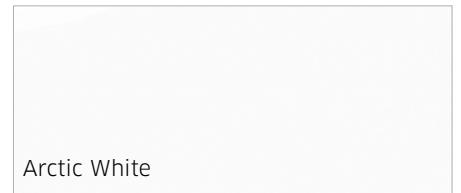
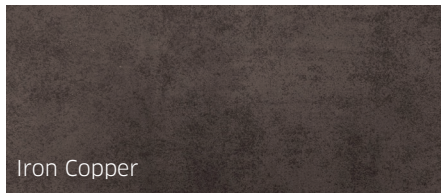
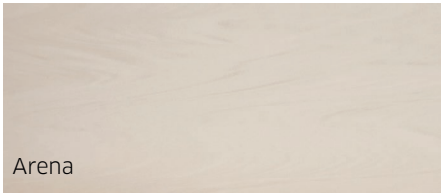
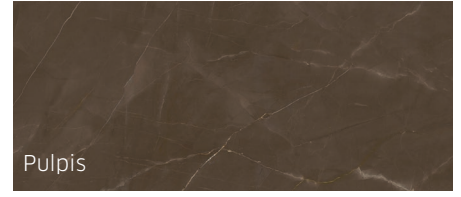


Drain cover in the same color

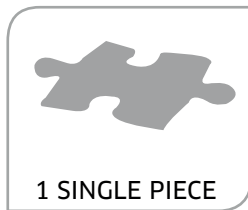
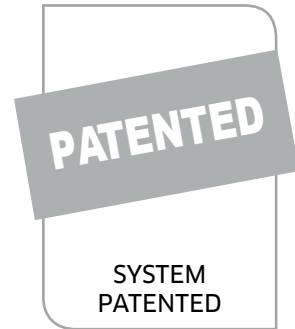
Colors in Stock



Other Colors available as special orders



Technical Characteristics



NEOLITH[®]

SINTERED STONE

Technical Characteristics



LIGHT



RESISTANT TO BENDING



WATERPROOF



100% NATURAL



SCRATCH RESISTANT



RECYCLABLE



HIGH-TEMPERATURE
RESISTANT



HYGIENIC



EASY TO CLEAN



UV RAY RESISTANT









Pol. Ind. "La Teuleria"
C/ Tramuntana, 51-52
08588 Sora, (Barcelona)
938 529 024
info@piattibelli.com
www.piattibelli.es

NEOLITH
SINTERED STONE